

# Centre for Health Economics

## Seminar Series

---

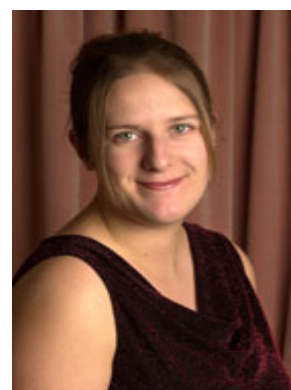
### 'Accounting for differences between EQ-5D and SF-6D scores in a (sub) population'



Co-Presented by

**Mr Garry Barton & Dr Tracey Sach**

**Date:** Wednesday 30<sup>th</sup> November 2005  
**Time:** 1:00-2:00pm  
**Venue:** RB Scotton Room  
2<sup>nd</sup> Floor, Building 75  
Monash University  
Clayton, 3800



---

We report the results of a study that estimated EQ-5D and SF-6D scores for all patients  $\geq 45$  years in one general practice, and estimated scores for sub-populations with knee pain, back pain, hip pain, heart disease, stroke, asthma, cancer, diabetes, rheumatoid arthritis and osteoarthritis. We identify which health problems have significantly different mean utility scores according to the two measures, and explain why.

#### Presenters:

i) Mr Garry Barton:

Since completing the MSc in Health Economics at the University of York in 1997, he has worked on the economic evaluation of many different health service interventions. Most recently, this involved working at the Nottingham MRC Institute of Hearing research, where research was undertaken to estimate the cost-effectiveness of both paediatric and adult cochlear implantation. In 2004, he received an ESRC/MRC PhD studentship at the University of Nottingham, to look at 'economic aspects of non-steroidal anti-inflammatory drug (NSAID) provision'. Components of this work include a population ascertainment in order to identify who uses NSAIDs and the health states (according to the EQ-5D, SF-6D, etc.) of different population groups, an analysis of NSAID prescribing figures (for different NSAIDs, over time, and between GPs), and an outcome assessment of different interventions for people with knee pain.

ii) Dr Tracey Sach:

Dr Tracey Sach is a lecturer in health economics within the School of Community Health Sciences at the University of Nottingham, UK. She has a number of other roles both within the University of Nottingham, including being course coordinator of the MSc in Health Services Research and acting as a teaching assessor for the PGCHE (Postgraduate Certificate in Higher education), and beyond, including being a non-executive director for Broxtowe and Hucknall NHS Primary Care Trust, and academic partner to West Lincolnshire Primary Care Trust's Operational Research Group. She has a PhD (University of Nottingham) and MSc in Health Economics (University of York). Tracey is currently working on a number of research projects evaluating the cost effectiveness of interventions/services designed for knee pain, falls prevention, dementia, and cataracts.

**VISITORS ARE MOST WELCOME.** The Seminar Series is free of charge. For confirmation of your attendance and further information please telephone 9905 0733 or email [che@buseco.monash.edu.au](mailto:che@buseco.monash.edu.au)