

Centre for Health Economics

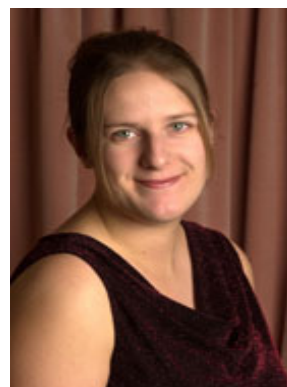
Seminar Series

'A 'league table' of willingness-to-pay values in health: More questions than answers?'

Presented by

Dr Tracey Sach

Date: Wednesday 9th November 2005
Time: 1:00-2:00pm
Venue: RB Scotton Room
2nd Floor, Building 75
Monash University
Clayton, 3800



Despite the increasing popularity of contingent valuation (CV) in health care, little is known about the *relative* magnitude of values elicited across interventions, the comparability of these values (in terms of methodologies used to elicit them), or how the values are being used as a basis for policy. We address this gap by compiling a 'league table' of willingness-to-pay (WTP) values, which, as far as the authors are aware, has not been attempted before in this context. The potential advantages of the approach are that it: (i) enables findings to be put into a broader context such that the relative meaning of values elicited can be explored; (ii) may be able to help inform decision-makers about health care resource allocation decisions; and (iii) may bring greater prominence to these values in a policy context.

In this presentation an outline of the methods used to identify and review the included studies will be presented along with preliminary results. It is hoped that it will provoke a discussion of the challenges in taking this approach and potential future directions for CV research.

Presenter

Dr Tracey Sach is a lecturer in Health Economics within the School of Community Health Sciences at the University of Nottingham, UK. She has a number of other roles both within the University of Nottingham, including being course coordinator of the MSc in Health Services Research and acting as a teaching assessor for the PGCHE (Postgraduate Certificate in Higher education), and beyond, including being a non-executive director for Broxtowe and Hucknall NHS Primary Care Trust, and academic partner to West Lincolnshire Primary Care Trust's Operational Research Group. She has a PhD (University of Nottingham) and MSc in Health Economics (University of York).

Tracey is currently working on a number of research projects evaluating the cost effectiveness of interventions/services designed for knee pain, falls prevention, dementia, and cataracts.

VISITORS ARE MOST WELCOME. The Seminar Series is free of charge. For confirmation of your attendance and further information please telephone 9905 0733 or email che@buseco.monash.edu.au